



# 2014

## PLANNING & ALLOCATIONS COMMITTEE REPORT



Jewish Federation  
OF ST. LOUIS

Approved by Jewish Federation of St. Louis Board of Directors

# TABLE OF CONTENTS

CHAIR'S INTRODUCTION	1
P&A COMMITTEE STRUCTURE AND PROCESS	2
SUMMARY OF 2014-15 ALLOCATIONS	3
UNRESTRICTED LOCAL ALLOCATIONS	4
STRATEGIC PROGRAM GRANT ALLOCATIONS	5
CARING FOR JEWS IN NEED-DOMESTIC/COMMUNITY ENGAGEMENT	6
ENSURING THE JEWISH FUTURE	7
CARING FOR JEWS IN NEED-OVERSEAS	8
ISRAEL MULTIYEAR PROJECT	9
ALLOCATIONS TO BENEFICIARY AGENCIES	10
NATIONAL AGENCY ALLOCATIONS	11
SELECTED NEW STRATEGIC PROGRAM GRANTS 2013-14	12
NATURALLY OCCURRING RETIREMENT COMMUNITY	14
GOVERNMENT RELATIONS	15
PROGRAMMATIC FUNDING OPPORTUNITIES	16
OVERSIGHT OF FUNDS	17
PLANNING & ALLOCATIONS COMMITTEE AND STAFF	18
THANK YOU	20

# CHAIR'S INTRODUCTION

Thank you for the opportunity to serve as the chair of Planning & Allocations. Under the leadership of the Planning & Allocations committee, including the outstanding subcommittees, their chairs and the dedicated staff, 8.56 million dollars have been allocated to our community and overseas in 2014.

The idea of the individual giving to create a greater whole is a strong theme in Jewish history. Consider the individual contributions to the Tabernacle, the portable house of worship, which not only enabled the building of this important structure, but also helped transform the individual givers into a nation. As Rabbi Jonathan Sacks stated, this process gave the Jewish people “the dignity of labor and creative endeavor. It brought to closure their birth as a nation, and it symbolized the challenge of the future.” ([rabbisacks.org/terumah-5774-home-build-together](http://rabbisacks.org/terumah-5774-home-build-together))



With the generous donations from each of you, Planning & Allocations has worked to help build and sustain our Jewish community. Some highlights of that work include:

**Jewish Engagement**—Working with professionals in agencies and synagogues and outside traditional venues, Federation has created new programmatic grants to engage all sectors, with a particular emphasis on young families and professionals. Federation’s Millstone Institute is a strong example of this multifaceted approach, providing its signature Fellows, JPro and LENS On programs for leadership development. The integration between the Central Agency for Jewish Education (CAJE) and Federation will further enhance this vision. This move is aimed at maximizing and enhancing our effectiveness. Across North America, 75% of all bureaus of Jewish education are operated within Federations, and only seven independent agencies still exist.

**Caring for Those in Need**—Covenant Place is building a new 101-unit low-income senior living facility on the I.E. Millstone Jewish Community Campus. Federation participated in the planning and helped identify resources to support them in these efforts.

**Outstanding Jewish Education**—Working closely with the day schools and collaborating with RAVSAK: The Jewish Community Day School Network, Federation is assessing whether the current school benchmarks will create vibrant, sustainable, high-quality day schools.

**Agency Excellence**—Planning & Allocations participated in two important agency reviews, one of the St. Louis Hillel at Washington University (through the office of Hillel International) and another of the Jewish Community Relations Council (JCRC), with the help of a consultant. We hope that these assessments will help both Hillel and JCRC grow and better serve the community.

This report contains extensive detail around each of the allocations, and we hope that you will share your feedback so we can continue to improve the allocation of these important community resources.

Thanks to each of you for being a part of our community, for your philanthropic contributions, and for your time and energy. Through dedication, collaboration and optimism, we can work for the future we know we can build together.

Sincerely,

A handwritten signature in black ink that reads "Ruth Raskas".

Ruth Raskas, Chair, Planning & Allocations

# PLANNING & ALLOCATIONS COMMITTEE STRUCTURE AND PROCESS



# SUMMARY OF 2014-15 ALLOCATIONS

2013-14 ACTUAL

2014-15 APPROVED % CHANGE

## UNRESTRICTED

Local Agencies	\$3,462,425	\$3,462,425	0.0%
% of Total	40.8%	40.4%	
Israel & Overseas	\$2,092,721	\$2,092,721	0.0%
% of Total	24.6%	24.4%	
<b>SUBTOTAL</b>	<b>\$5,555,146</b>	<b>\$5,555,146</b>	<b>0.0%</b>
% of Total	65.4%	64.9%	

## JEWISH FEDERATION RESERVE FUND

JFed Reserve Fund	\$68,000	\$50,000	-26.5%
% of Total	0.8%	0.6%	

## RESEARCH FUND (COMMUNITY STUDY)

Research Fund	-	\$42,478	-
% of Total	0.0%	0.5%	

## STRATEGIC PROGRAM GRANTS

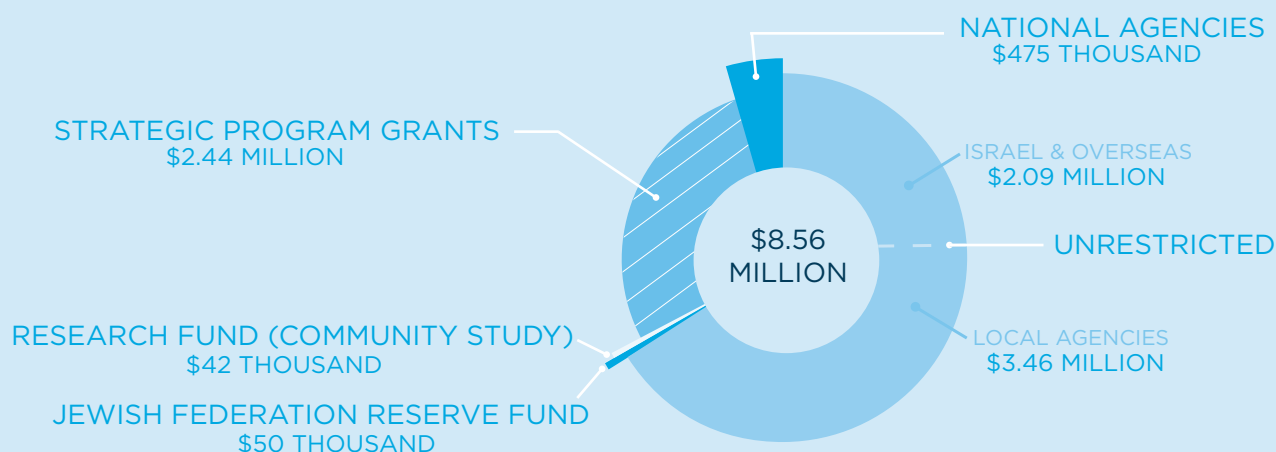
Ensuring the Jewish Future	\$1,069,689	\$1,130,547	5.7%
% of Total	12.6%	13.2%	
Caring for Jews in Need-Domestic	\$582,522	\$582,768	0.0%
% of Total	6.9%	6.8%	
Caring for Jews in Need-Overseas	\$532,489	\$532,489	0.0%
% of Total	6.3%	6.2%	
Community Engagement	\$192,125	\$192,125	0.0%
% of Total	2.3%	2.2%	
<b>SUBTOTAL</b>	<b>\$2,376,825</b>	<b>\$2,437,929</b>	<b>2.6%</b>
% of Total	28.0%	28.5%	

## NATIONAL AGENCIES

National Agencies	\$136,951	\$116,451	-15.0%
% of Total	1.6%	1.4%	
JFNA Dues	\$358,534	\$358,534	0.0%
% of Total	4.2%	4.2%	
<b>SUBTOTAL</b>	<b>\$495,485</b>	<b>\$474,985</b>	<b>-0.4%</b>
% of Total	5.8%	5.5%	

## TOTAL ALLOCATED

\$8,495,456 \$8,560,538 0.8%





# UNRESTRICTED LOCAL ALLOCATIONS

For 2014–15, unrestricted allocations were kept at the same level as last year. This is the first time since the implementation of the new allocation model that no reductions have been made.

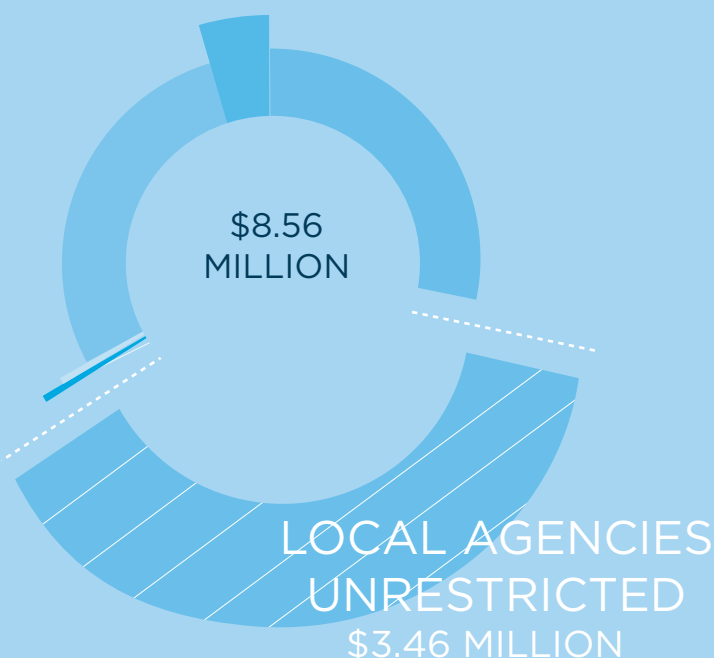
	2013-14 ACTUAL	2014-15 APPROVED	% CHANGE
Central Agency for Jewish Education	\$653,942	\$653,942	0.0%
Covenant Place Foundation	\$69,887	\$69,887	0.0%
Day School Pool*	\$495,989	\$495,989	0.0%
Hillel-University of Missouri	\$59,597	\$59,597	0.0%
Holocaust Museum & Learning Center	\$205,706	\$205,706	0.0%
Jewish Community Center	\$991,405	\$991,405	0.0%
Jewish Community Relations Council	\$285,055	\$285,055	0.0%
Jewish Family & Children's Service	\$329,603	\$329,603	0.0%
MERS/Goodwill	\$41,904	\$41,904	0.0%
St. Louis Hillel at Washington University	\$107,445	\$107,445	0.0%
St. Louis Jewish Light	\$77,170	\$77,170	0.0%
Saul Brodsky Jewish Community Library	\$144,722	\$144,722	0.0%
<b>TOTAL ALLOCATED</b>	<b>\$3,462,425</b>	<b>\$3,462,425</b>	<b>0.0%</b>

\*Individual day school allocations will be determined in Fall 2014.

2013-14 allocations:

- Epstein Hebrew Academy-\$105,779
- Saul Mirowitz Jewish Community Day School-\$165,664
- Torah Prep School-\$188,431

In addition, \$36,115 was utilized to hire a consultant to make recommendations for implementing a new day school funding model.



“

Federation-supported programs and services help Covenant Place residents maintain their independence. These services are vital to the well-being of older adults and for many, mean the difference between living independently and requiring nursing home care.

”

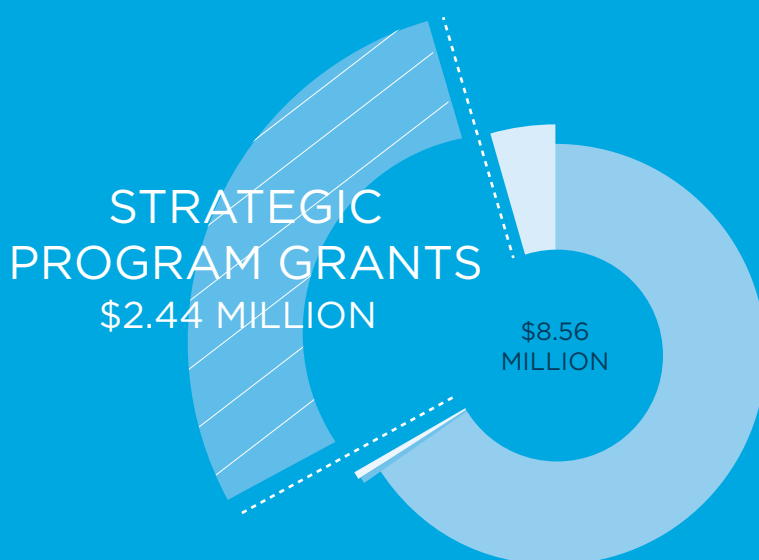
Joan Denison,  
Executive Director of  
Covenant Place

# STRATEGIC PROGRAM GRANT ALLOCATIONS

Strategic program grants were distributed over the course of the fiscal year. In June 2013, the Board of Directors approved the distribution of 40 strategic program grants. Eighteen additional strategic program grants were approved between August 2013 and May 2014.

	2013-14 ACTUAL	2014-15 APPROVED	% CHANGE
SUMMARY			
Caring for Jews in Need-Domestic	\$582,522	\$582,768	0.0%
Caring for Jews in Need-Overseas	\$532,489	\$532,489	0.0%
Community Engagement	\$192,125	\$192,125	0.0%
Ensuring the Jewish Future	\$1,069,689	\$1,130,547	5.7%
<b>TOTAL ALLOCATED</b>	<b>\$2,376,825</b>	<b>\$2,437,929</b>	<b>2.6%</b>

Detailed charts for these efforts are outlined on pages 5-9



## STRATEGIC PROGRAM GRANTS AWARDED



# CARING FOR JEWS IN NEED-DOMESTIC

These grants support programs that identify, monitor and care for the most vulnerable Jews in St. Louis.

2013-14 ACTUAL 2014-15 APPROVED % CHANGE

Jewish Community Center			
Social Nutrition	\$143,950	\$143,950	0.0%
Adult Day Program Scholarships	-	\$10,000	N/A
Jewish Family & Children's Service			
Lifeline	-	\$20,000	N/A
ElderLink Outreach	\$45,808	TBD	N/A
Chaplaincy	\$73,959	TBD	N/A
Financial Assistance	-	\$19,429	N/A
Counseling	-	\$49,071	N/A
JF&CS/JCC Grant to replace Ephraim Block <sup>1</sup>	\$84,000	-	-100.0%
JF&CS Neve Shalom-Shalvah	-	\$10,000	N/A
JF&CS Covenant Place-Homemaker Services	\$25,000	\$25,000	0.0%
Crown Center			
Social Nutrition	\$61,402	\$61,402	0.0%
Russian Case Manager	\$5,000	\$5,000	0.0%
Jewish Federation			
Orthodox Community Service Study <sup>1</sup>	\$5,000	-	-100.0%
Inclusion Coordinator	\$28,633	TBD	N/A
B'ai Amoonah-Rosh Pina Inclusion Certification <sup>1</sup>	\$2,500	-	-100.0%
Congregations-Rabbinic Chesed Fund	\$19,000	TBD	0.0%
Reserve for midyear renewals	-	\$167,400	N/A
Reserve for new programs	\$88,270	\$71,516	-19.0%
<b>TOTAL ALLOCATED</b>	<b>\$582,522</b>	<b>\$582,768</b>	<b>0.0%</b>

# COMMUNITY ENGAGEMENT

These grants support programs that educate and advocate for a strong Israel and safe Jewish world.

2013-14 ACTUAL 2014-15 APPROVED % CHANGE

Jewish Community Relations Council			
Israel Business & Technology Committee	\$12,125	-	-100.0%
Arab-Hebrew Theater <sup>1</sup>	\$12,000	-	-100.0%
Hillel-University of Missouri			
Israel Engagement Worker	\$20,000	TBD	N/A
Jewish Federation			
Dr. Dalia Fadila <sup>1</sup>	\$5,500	-	-100.0%
Speaker Series	\$15,000	TBD	N/A
Israel Missions-Art & Public Schools <sup>1</sup>	\$40,000	-	-100.0%
Jewish People Policy Institute (JPPI)	\$11,000	\$11,000	0.0%
Israel Movement for Progressive Judaism	\$17,000	\$17,000	0.0%
Ruach Hadasha	\$10,000	\$10,000	0.0%
ITIM	-	\$15,000	N/A
Taub Institute	-	\$5,000	N/A
Q-Schools	-	\$15,000	N/A
Hand in Hand	-	\$10,000	N/A
Megiddo Regional Council	-	\$5,000	N/A
Jerusalem College of Technology	-	\$10,000	N/A
Reserve for mid-year renewals	-	\$35,000	N/A
Reserve for new programs	\$49,500	\$59,125	19.4%
<b>TOTAL ALLOCATED</b>	<b>\$192,125</b>	<b>\$192,125</b>	<b>0.0%</b>

Grants in blue were made mid-year 2013-14 and will be considered for renewal during 2014-15.

<sup>1</sup> One-time grant; renewal not needed

<sup>2</sup> Program did not submit renewal request



# ENSURING THE JEWISH FUTURE

These grants support programs that ensure Jewish identity and engagement and create a vibrant local Jewish community.

	2013-14 ACTUAL	2014-15 APPROVED	% CHANGE
Central Agency for Jewish Education			
Israel Experience Center	\$160,000	\$186,050	16.3%
Teacher Certification <sup>2</sup>	\$27,600	-	-100.0%
PJ Library*	\$75,000	\$71,930	-4.1%
Concierge for Families With Young Children	\$39,249	\$41,300	5.2%
One Happy Camper	\$71,250	\$89,483	25.6%
Focus Israel Pedagogic Program <sup>1</sup>	\$16,700	-	-100.0%
Community Professionals			
Yokneam-Megiddo Professional Exchange <sup>2</sup>	\$40,000	-	-100.0%
Jewish Community Center			
Songleader Boot Camp	\$15,500	TBD	N/A
Nishmah	\$7,000	TBD	N/A
Yom Ha'atzmaut	\$5,000	TBD	N/A
Shaliach	\$45,000	TBD	N/A
Saul Brodsky Jewish Community Library			
Archives	-	\$14,800	N/A
Jewish Federation			
Summer College Internships	\$15,000	TBD	N/A
Interfaith Mission	\$37,350	TBD	N/A
Birthright Israel	\$108,297	\$108,297	0.0%
Congregations			
Jewish Family Education Grants <sup>2</sup>	\$78,099	-	-100.0%
Torah MiTzion Kollel			
Sherut Leumi	\$30,000	\$30,000	0.0%
Jewish Student Union	\$30,000	\$33,000	10.0%
Next Dor	\$10,000	\$10,000	0.0%
Jewish Agency for Israel			
Yokneam-Megiddo Partnership2Gether	\$50,560	\$62,800	24.2%
Partnership 2Gether Keshet B'Kitah	\$4,000	\$29,500	637.5%
Summer Camps-Former Soviet Union	\$50,000	\$50,000	0.0%
Community Innovators			
Innovation Fund	\$45,000	\$60,000	33.3%
Chabad on Campus-J Grads	-	\$32,600	N/A
St. Louis Kollel			
Torah & Turf	\$7,500	TBD	N/A
Reserve for mid-year renewals	-	\$132,350	N/A
Reserve for new programs	\$101,584	\$178,437	75.7%
TOTAL ALLOCATED			
	\$1,069,689	\$1,130,547	5.7%

Grants in blue were made mid-year 2013-14 and will be considered for renewal during 2014-15.

\*Additional 2014-15 funding of \$13,070 provided through Adele Roman Endowment Fund

1 One-time grant; renewal not needed

2 Program did not submit renewal request

# CARING FOR JEWS IN NEED-OVERSEAS

These grants support programs that identify, monitor and care for the most vulnerable Jews in Israel and overseas.

	2013-14 ACTUAL	2014-15 APPROVED	% CHANGE
Megiddo Regional Council			
Gilor-Megiddo Elderly Services	\$9,000	\$9,000	0.0%
Yokneam Municipality			
Association for the Aged-Yokneam	\$9,000	\$9,000	0.0%
American Jewish Joint Distribution Committee			
Elderly Jews in the Former Soviet Union	\$57,000	\$57,000	0.0%
STRIVE	\$12,000	\$12,000	0.0%
Leket Israel	\$20,000	\$16,400	-18.0%
Muzot	\$20,000	\$20,000	0.0%
Economic Empowerment for Women	\$12,000	\$15,000	25.0%
Jaffa Institute	\$10,000	-	-100.0%
Israel Trauma Coalition			
Helping the Helpers	\$15,000	\$15,000	0.0%
Emergency Preparedness-Yokneam <sup>1</sup>	\$20,000	-	-100.0%
Crossroads	\$12,000	\$12,000	0.0%
Jewish Agency for Israel			
Victims of Terror Project	\$7,500	\$7,500	0.0%
Orr Shalom	\$20,000	\$20,000	0.0%
JAFI/Megiddo Council/Yokneam			
Israel Multi-year Project	\$288,280	\$288,857	0.2%
Jewish Federations of North America			
Ukraine Crisis Emergency Grant <sup>1</sup>	\$16,962	-	-100.0%
Beit Uri	-	\$10,000	N/A
Alliance Israelite Universelle			
Cracking the Glass Ceiling	-	\$20,000	N/A
Shekel	-	\$15,000	N/A
Reserve for new programs	\$3,747	\$5,732	53.0%
<b>TOTAL ALLOCATED</b>	<b>\$532,489</b>	<b>\$532,489</b>	<b>0.0%</b>

<sup>1</sup> One-time grant; renewal not needed

<sup>2</sup> Program did not submit renewal request

# ISRAEL MULTI-YEAR PROJECT

These grants are part of a multi-year project to assist families in distress with children and youth at risk in Yokneam and Megiddo.

2014-15 APPROVED

## MEGIDDO

Family Mentoring & Empowerment	\$15,350
Otzma Enrichment Center	\$20,000
MALEH	\$6,000
Special Needs Accompaniment	\$5,000

## YOKNEAM

Families Empowerment	\$39,278
Preschool*	\$4,254
Etrog Kindergarten	\$2,683
Elementary School	\$22,826
High School	\$15,341
Hapoel Soccer	\$6,700
Bayit Cham	\$10,440
Youth Department	\$35,000
Kfar Hassidim	\$13,000

## MEGIDDO & YOKNEAM

Youth Futures	\$28,000
---------------	----------

TOTAL PROGRAMS	\$223,872
Additional-Evaluation	\$11,500
Additional-Program Staffing	\$53,485
TOTAL MULTI-YEAR PROJECT	\$288,857

\*An additional \$4,746 will be allocated to this program through Operation Promise

## Family Mentoring & Empowerment

Family empowerment and employment assistance

## Otzma Enrichment Center

After-school enrichment for the most at-risk children in Megiddo; parent groups and therapy

## MALEH

School-based intervention for high school students at risk of dropping out

## Special Needs Accompaniment

Specific response to 130 families with children with special needs

## Families Empowerment

Coaching to help integrate Ethiopian families into Israeli society

## Preschool

Program to strengthen language and learning skills required for integration into kindergarten for children 0-6 years

## Kindergarten

Extended school day program at integrated kindergartens

## Elementary School

Scholastic assistance and therapies within the school framework after school hours

## High School

Scholastic assistance for 100 Ethiopian and at-risk students in ORT high school

## Hapoel Soccer

High-quality soccer program for Ethiopian children and teens

## Bayit Cham

After-school home for the most at-risk children

## Youth Department

After-school enrichment programs and counseling at two local youth centers

## Kfar Hassidim

After-school scholastic assistance for all Ethiopian youth learning outside of Yokneam

## Youth Futures

Adult role models serve as a liaison between the child and parents and the school

# TOTAL ALLOCATIONS TO BENEFICIARY AGENCIES

Beneficiary agencies receive unrestricted allocations and are also eligible to receive strategic program grants.

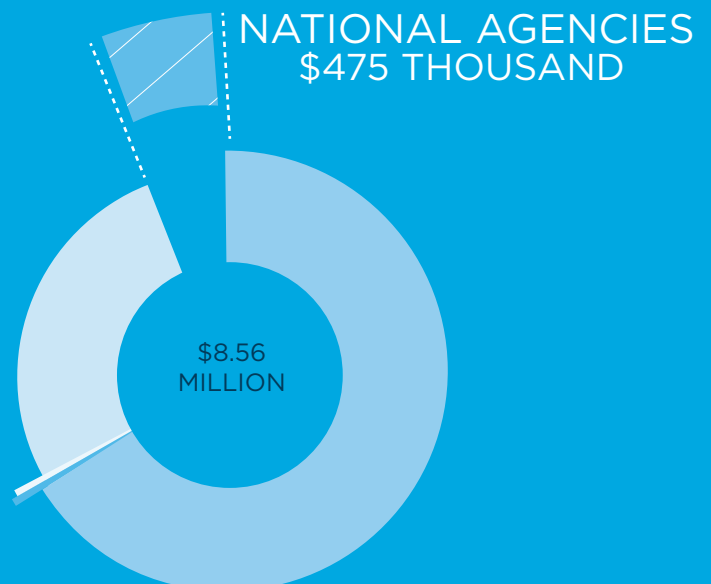
	2013-14 ACTUAL			2014-15 APPROVED		
	UNRESTRICTED	PROGRAM GRANTS	TOTAL	UNRESTRICTED	PROGRAM GRANTS	TOTAL
CENTRAL AGENCY FOR JEWISH EDUCATION	\$653,942	-	\$653,942	\$653,942	-	\$653,942
Israel Experience Center	-	\$160,000	\$160,000	-	\$186,050	\$186,050
Teacher Certification	-	\$27,600	\$27,600	-	-	-
PJ Library	-	\$75,000	\$75,000	-	\$71,930	\$71,930
Concierge for Families With Young Children	-	\$39,249	\$39,249	-	\$41,300	\$41,300
One Happy Camper	-	\$71,250	\$71,250	-	\$89,483	\$89,483
Focus Israel Pedagogic Program	-	\$16,700	\$16,700	-	-	-
TOTAL	\$653,942	\$389,799	\$1,043,741	\$653,942	\$388,763	\$1,042,705
COVENANT PLACE FOUNDATION	\$69,887	-	\$69,887	\$69,887	-	\$69,887
DAY SCHOOL POOL	\$495,989	-	\$495,989	\$495,989	-	\$495,989
HILLEL-UNIVERSITY OF MISSOURI	\$59,597	-	\$59,597	\$59,597	-	\$59,597
Israel Engagement Worker	-	\$20,000	\$20,000	-	TBD	-
TOTAL	\$59,597	\$20,000	\$79,597	\$59,597	-	\$59,597
HOLOCAUST MUSEUM & LEARNING CENTER	\$205,706	-	\$205,706	\$205,706	-	\$205,706
JEWISH COMMUNITY CENTER	\$991,405	-	\$991,405	\$991,405	-	\$991,405
Social Nutrition	-	\$143,950	\$143,950	-	\$143,950	\$143,950
Songleader Bootcamp	-	\$15,500	\$15,500	-	TBD	-
Nishmah It's A Guy Thing	-	\$7,000	\$7,000	-	TBD	-
Yom Ha'atzmaut Celebration	-	\$5,000	\$5,000	-	TBD	-
Shaliach	-	\$35,000	\$35,000	-	TBD	-
Adult Day Center Scholarships	-	-	-	-	\$20,000	\$20,000
TOTAL	\$991,405	\$206,450	\$1,197,855	\$991,405	\$163,950	\$1,155,355
JEWISH COMMUNITY RELATIONS COUNCIL	\$285,055	-	\$285,055	\$285,055	-	\$285,055
Israel Business & Technology Committee	-	\$12,125	\$12,125	-	-	-
Arab-Hebrew Theater	-	\$12,000	\$12,000	-	-	-
TOTAL	\$285,055	\$24,125	\$309,180	\$285,055	-	\$285,055
JEWISH FAMILY & CHILDREN'S SERVICE	\$329,603	-	\$329,603	\$329,603	-	\$329,603
ElderLink Outreach	-	\$45,808	\$45,808	-	TBD	-
Chaplaincy	-	\$73,959	\$73,959	-	TBD	-
Lifeline 2.0	-	-	-	-	\$20,000	\$20,000
Financial Assistance	-	-	-	-	\$19,429	\$19,429
Counseling	-	-	-	-	\$49,071	\$49,071
TOTAL	\$329,603	\$119,767	\$449,370	\$329,603	\$88,500	\$418,103
ST. LOUIS JEWISH LIGHT	\$77,170	-	\$77,170	\$77,170	-	\$77,170
SAUL BRODSKY JEWISH COMMUNITY LIBRARY	\$144,722	-	\$144,722	\$144,722	-	\$144,722
Archives	-	-	-	-	\$14,800	\$14,800
TOTAL	\$144,722	-	\$144,722	\$144,722	\$14,800	\$159,522
ST. LOUIS HILLEL-WASHINGTON UNIVERSITY	\$107,445	-	\$107,445	\$107,445	-	\$107,445
MERS/GOODWILL	\$41,904	-	\$41,904	\$41,904	-	\$41,904
JF&CS COVENANT PLACE/HOMEMAKER SERVICES	-	\$25,000	\$25,000	-	\$25,000	\$25,000

TOTAL ALLOCATED TO BENEFICIARY AGENCIES	\$3,462,425	\$785,141	\$4,247,566	\$3,462,425	\$681,013	\$4,143,438
---	-------------	-----------	-------------	-------------	-----------	-------------

# NATIONAL AGENCY ALLOCATIONS

Allocations are made to national agencies that address Federation's strategic priorities and have an impact on the St. Louis community.

	2013-14 ACTUAL	2014-15 APPROVED	CHANGE
<b>ENSURING THE JEWISH FUTURE</b>			
B'nai B'rith Youth Organization	\$3,800	\$3,800	0.0%
Jewish Community Centers Association	\$19,000	\$19,000	0.0%
Hillel: Foundation for Jewish Campus Life	\$23,750	\$23,750	0.0%
Moishe House	\$2,375	\$2,375	0.0%
<b>TOTAL ALLOCATED</b>	<b>\$48,925</b>	<b>\$48,925</b>	<b>0.0%</b>
<b>COMMUNITY ENGAGEMENT</b>			
Israel Action Network	\$11,926	\$11,926	0.0%
Jewish Telegraphic Agency	\$9,500	\$9,500	0.0%
Jewish Council for Public Affairs	\$9,500	\$9,500	0.0%
American Jewish Committee	\$19,000	\$19,000	0.0%
Anti-Defamation League	\$17,100	\$17,100	0.0%
United Against Nuclear Iran (UANI)	\$20,000	-	-100.0%
<b>TOTAL ALLOCATED</b>	<b>\$87,026</b>	<b>\$67,026</b>	<b>-23.0%</b>
<b>TOTAL NATIONAL AGENCY ALLOCATIONS</b>	<b>\$135,951</b>	<b>\$115,951</b>	<b>-14.7%</b>
<b>JEWISH FEDERATIONS OF NORTH AMERICA &amp; DUES</b>			
Jewish Federations of North America	\$358,534	\$358,534	0.0%
Jewish Communal Service Association of North America	\$500	\$500	0.0%
World Council of Jewish Communal Service	\$500	-	-100%
<b>TOTAL DUES</b>	<b>\$359,534</b>	<b>\$359,034</b>	<b>-0.1%</b>
	<b>\$0</b>	<b>\$0</b>	
<b>TOTAL ALLOCATED</b>	<b>\$495,485</b>	<b>\$474,985</b>	<b>-4.1%</b>





# 2013-14

## SELECTED NEW STRATEGIC PROGRAM GRANTS

---

In 2013-14, several new programs were funded. Among them are several selections listed here.

### THE CONGREGATIONAL CHESED FUND

Recognizing that some people have close relationships with their rabbis and are more comfortable going to them than a social service agency when they need short-term financial help, this fund provides grants of \$1,000 to the senior rabbis of St. Louis congregations and the Jewish Family & Children's Service Chaplaincy program. The money can be distributed at the rabbis' discretion to Jewish individuals with emergency financial needs.

### JEWISH COMMUNITY CENTER SONGLEADER BOOT CAMP

The Songleader Boot Camp unites an international, supercharged community of rabbis, cantors, Jewish educators, songleaders, teens and adults to experience the best of the best in Jewish education, leadership, and music. The camp is already recognized as one of the top Jewish leadership training experiences in North America, facilitated by the most outstanding educators and leaders in the Jewish world through dozens of exciting and content-rich courses.

### DR. DALIA FADILA VISIT

In September/October 2013, St. Louis welcomed Dr. Fadila, founder of Q-Schools, private schools in Israel that offer a unique approach to teaching English to Arab students. She met with several different groups, including Jewish Federation, Central Reform Congregation, the Rabbinical Association, Ladue Schools, CAJE, Maryville University, the American Jewish Committee and the Jewish-Muslim dialogue group of JCRC.





## INCLUSION COORDINATOR

Federation added this new part-time position to work with the Inclusion Initiative committee to develop and support programs that help individuals with disabilities participate fully in Jewish life.

## INTERFAITH MISSION

The connection to Israel is important for our Jewish community. For the non-Jewish partners of intermarried families, this concept can be particularly challenging to understand, because the connection to a specific country for religious reasons does not exist in most other faiths. This trip was designed to provide experiences and opportunities that enhance each participant's connection to Israel and strengthen the understanding of both the Jewish and non-Jewish partners. The mission was supported by grants from the Jonas and Herschel Weil fund and the Zimmerman family.

## ITIM-HELPING ISRAELIS WORK WITH THE RELIGIOUS ESTABLISHMENT

In May 2014, Rabbi Farber, the founder and director of ITIM, visited St. Louis. ITIM assists Israelis with the legal intricacies of personal status (marriage, divorce, conversion, burial, etc.) that are administered by the Ministry of Religious Services. Rabbi Farber met with JCRC council members, rabbis and other interested parties and gave a community lecture at Young Israel, co-sponsored by Bais Abraham Congregation.

## INNOVATION GRANTS

Designed to tap into the creativity that exists beyond Jewish community congregations, agencies and organizations, these grants were made available to individuals living in St. Louis who wanted to test their ideas. The goal was to stimulate the growth of new ideas that address Jewish education or engagement in the St. Louis Jewish community. In this first year, eight grants, which ranged from \$200 to \$10,000, were awarded to projects as diverse as a shabbaton designed to celebrate Jewish values through the use of Grateful Dead music, a meetup website to facilitate connections of local Jewish individuals and families with similar interests, and a grassroots organization for LGBT Jews.



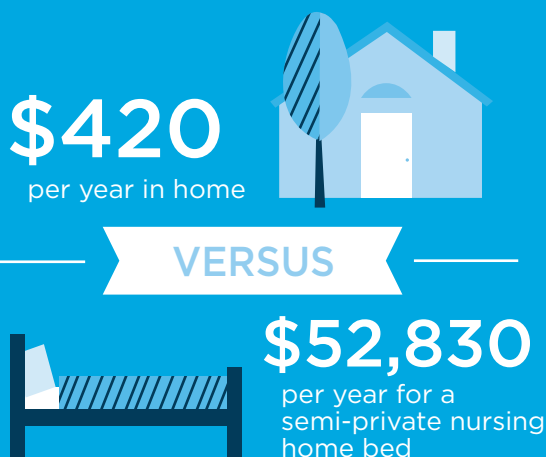
# NATURALLY OCCURRING RETIREMENT COMMUNITY



The St. Louis Naturally Occurring Retirement Community (NORC), which is celebrating 10 years of operations in 2014, continues to provide socialization and support services to enhance the lives of older adults and help them maintain their independence. The St. Louis NORC offers a path for adults 65 and older to maintain their quality of life and age in their own homes. By providing opportunities for socialization, fitness, and intellectual stimulation and services, like adding safety features to homes, the St. Louis NORC can easily extend a senior's self-sufficiency for years.

While services are provided only to residents in the three-mile area surrounding the Jewish Community Campus, activities are open to all adults aged 65 and older. Membership has grown annually, from 565 in 2008 to 643 in 2013. More than 1,714 individuals have participated in at least one activity.

In 2013-14, in addition to support from the state, the St. Louis NORC was sustained financially by membership dues, Neighborhood Assistance Program tax credits from the State of Missouri, donations from individual donors, two endowments, a donation and a grant from the Women's Auxiliary for the Jewish Aged (formerly JCA Women's Auxiliary), an award from The Rams Foundation to one of the program's volunteers, a United Way allocation, and a grant from the JCA Charitable Trust. The St. Louis NORC has partnerships with service providers and religious institutions, including the Friedman Center for Aging at Washington University, the St. Louis County Department of Planning and the Older Resident Program, and, new this year, AARP.



In 2013, the cost of supporting one St. Louis NORC member in his or her home was \$420 a year, compared with the Missouri average cost of \$52,830 a year for a semi-private nursing home bed.



## GOVERNMENT RELATIONS OFFICE OF THE MISSOURI JEWISH FEDERATIONS

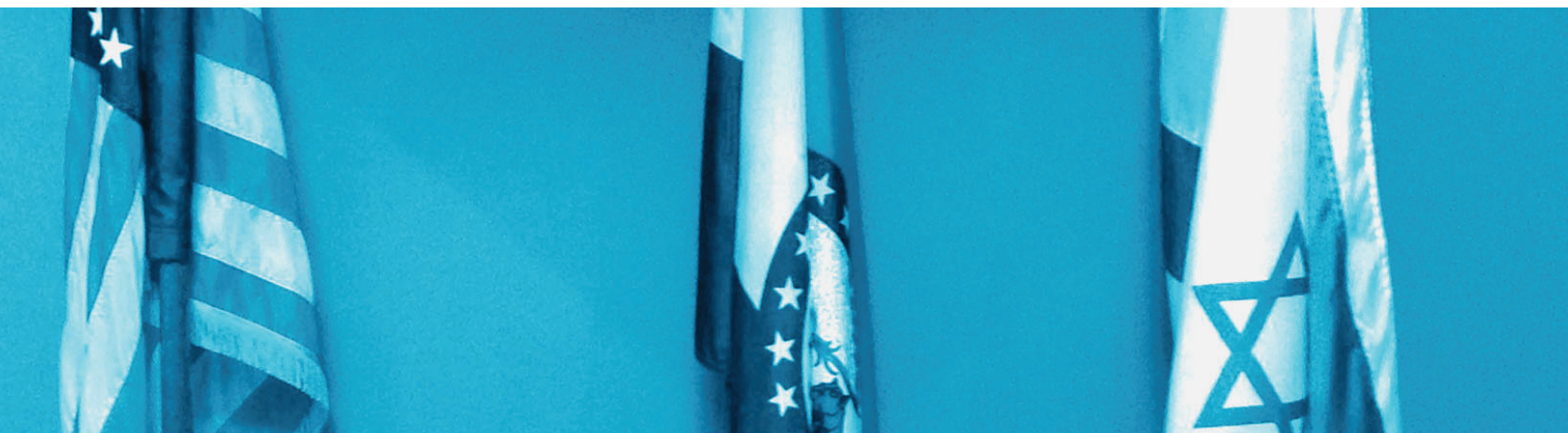
The Government Relations Office of the Missouri Jewish Federations (GROMJF) is concentrated in St. Louis and operates out of Jewish Federation. GROMJF acts on behalf of the Jewish communities of Missouri by taking a leadership role in legislation and accessing funding for Jewish communal organizations.

GROMJF continued its work in helping Missouri legislators realize the potential for the nonprofit/public partnership in supporting vulnerable Missourians within the framework of the general assembly's conservative ideology. GROMJF identified several objectives in December that guided work in Jefferson City, including:

- ▶ Expand the NORC program to gain greater acceptance of the model in Missouri and decrease its vulnerability in the state budget;
- ▶ Continue to advocate for the Social Innovation Grant program established through GROMJF's advocacy in 2013;
- ▶ Protect current tax credit programs that serve the nonprofit sector and are facing reduction or elimination;
- ▶ Assist agencies through regulatory and other governmental processes;
- ▶ Act as a conduit for information on the Missouri General Assembly to Jewish agencies.

GROMJF was able to show a number of accomplishments for these objectives through its work in Jefferson City this past session. Some of the highlights include:

- ▶ Establishment and funding of a Missouri Trade Desk in Israel—seen as both a tool of economic development for Missouri and a concrete way to show support for Israel by state legislators;
- ▶ NORC funding—expanded to include a second site in Kansas City;
- ▶ Funding for Social Innovation Grants—allowing the program to move forward;
- ▶ Assistance to Covenant Place for Missouri Housing Development Commission Funding—approved for their rebuilding project in the form of tax credits.



# PROGRAMMATIC FUNDING OPPORTUNITIES

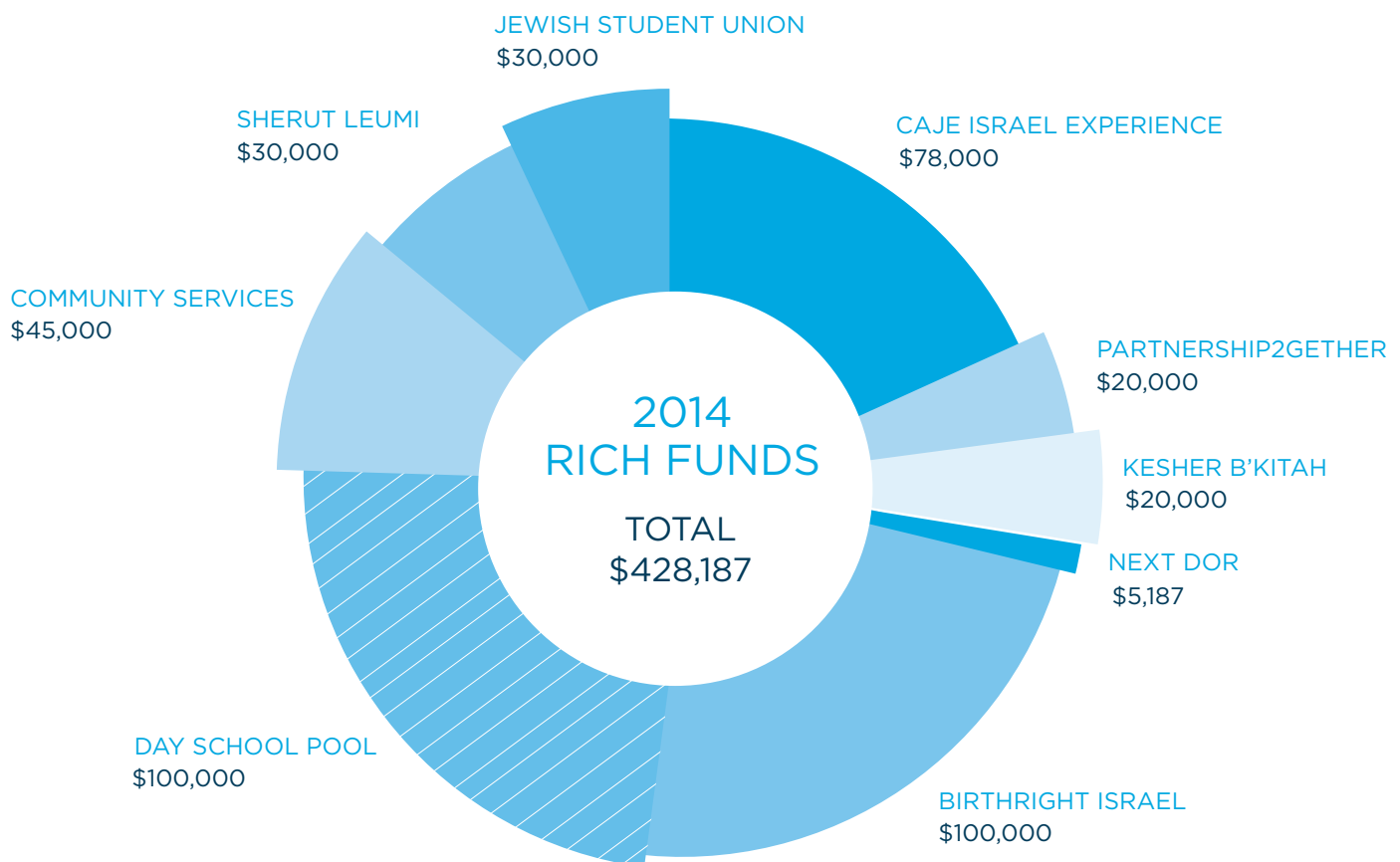
## THE BOHM FUND

The Bohm Fund was established in 1983 by Lee and the late Milford Bohm to provide seed money for new projects in Reform Jewish religious settings. The income from the fund may only be used to benefit children directly, rather than for general administrative costs of the temple or the religious school. A committee comprising leadership from Reform congregations makes recommendations on distribution of these funds. Funds may not be distributed if the fund balance goes below corpus. Approximately \$5,000 to \$7,000 is allocated when funding is available. Funds will be allocated in late 2014.

## THE RICH EDUCATION FUND

The Sam, Charles and Mamie Rich Education Fund was created in 1995 to provide support for Jewish educational and identity purposes of all kinds, as defined by Jewish Federation of St. Louis. Recommendations for distribution of the fund come primarily through the P&A Committee to the Federation's Board of Directors.

*The Rich funds are an important part of the total allocation to these programs and agencies. They do not represent a separate source of funding.*





# OVERSIGHT OF FUNDS

Overseen by the staff of the Planning & Allocations department, these funds are held by Jewish Federation, but many are directly administered by one of the constituent agencies.

## CHILDREN & FAMILY EMERGENCY RELIEF FUND

DISTRIBUTION 2013: \$0

Established to help families with limited resources through emergencies. Recommendations for the use of these funds come from the staff at Jewish Family & Children's Service.

## EPHRAIM BLOCK FAMILY CHARITABLE TRUST

DISTRIBUTION 2013: \$103,527

Established to aid indigent and destitute persons of the Jewish faith by Ephraim Block in loving memory of his parents, Louis and Sarah Block, and his siblings, Flora B. Block, Frances Block, Dena Block Greengard and Jacob Block. Funds are currently distributed to Jewish Family & Children's Service for assistance with rent and utilities and Jewish Community Center for day care scholarships. Of the total funds distributed in 2013, JF&CS received \$93,081 and the JCC received \$10,446.

## ROSE GROSS EMERGENCY RELIEF FUND

DISTRIBUTION 2013: \$804

This fund provides emergency aid to individuals and families in distress.

## JEWISH LOAN ASSOCIATION (JLA)

DISTRIBUTION 2013: \$39,900

Interest-free loans are provided to Jewish applicants who require aid for a limited period. Recommendations for the use of these funds come from the staff at Jewish Family & Children's Service.

## JULIUS, ANNA AND LILIAN JOSSEM MEMORIAL FUND

DISTRIBUTION 2013: \$4,928

Created by Lilian Jossem in her name and the names of her parents to assist elderly Jewish individuals. Providing the extras to make the lives of the elderly less lonely and more comfortable, the fund responds to requests from agency professionals and rabbis.

## LOUISE & BENJAMIN, MAJORIE & HARRY LOEB ENDOWMENT FOR INDIGENT JEWS

DISTRIBUTION 2013: \$13,521

Used primarily to provide direct cash assistance to both Jewish and other indigent clients. Recommendations for the use of these funds come from Jewish Family & Children's Service.

## STUART I. PESSIN RESTRICTED SCHOLARSHIP FUND

DISTRIBUTION 2013: \$2,500

The fund is designed to provide scholarships to support student travel to Israel, for the programs operated by the Central Agency for Jewish Education or Hillel at Washington University. The funds are distributed through the Jewish Federation of St. Louis.

## TERRY AND HARVEY HIEKEN ST. LOUIS CHESED FUND

DISTRIBUTION 2013: \$3,101

Established in 2010 to provide direct cash assistance to meet the special or emergency health and social welfare needs of Jewish individuals. Recommendations for the use of these funds are made by Jewish Family & Children's Service.

## LIFELINE FUND

DISTRIBUTION 2013: \$3,818

In 2008, Jewish Federation of St. Louis approved the creation of a \$500,000 package of direct financial assistance and interest-free loans designed to help Jewish clients with urgent financial needs because of the economic situation. These funds are distributed through Jewish Family & Children's Service. This is the final year for the program, although several former clients are receiving assistance through the Lifeline II program funded through the Planning & Allocations process. (Grants of \$3,818 were provided to Lifeline clients; however, no additional new funds were needed because of advances previously provided to the agency.)



## PLANNING & ALLOCATIONS COMMITTEE

### **Ruth Raskas, Chair**

Jon Baris

Patricia F. Croughan

Keren Douek

Burt Garland

Randall Green

Sarah Kovenock

Mark Levin

Michael Oberlander

Craig Rosenthal

Susan Schlichter

Jeff Sparks

Nadine Spitz

Leslie Stermann

## PLANNING & ALLOCATIONS DEPARTMENT STAFF

**Stephen Cohen, PhD**  
Vice President

Karen Berry-Elbert  
St. Louis NORC Manager

Sonia Dobinsky  
Senior Planning & Allocations Associate

Susan Scribner  
Senior Planning & Allocations Associate

Mindee Fredman  
Director of Foundations

Roberta Gartenberg  
St. Louis NORC Volunteer Coordinator

Joan Hirst  
St. Louis NORC Community Liaison

Lori Kabrun-Berry  
Interim Senior Planning & Allocations Associate

Rinat Kisin  
Inclusion Coordinator

Terri Sever  
Resource Assistant

## JEWISH FEDERATION OF ST. LOUIS

Andrew Rehfeld, PhD  
President and Chief Executive Officer

Patricia F. Croughan  
Board Chair



# MANY THANKS

---

We express our appreciation to these individuals who have served on our committees over the past year.

## COMMUNITY ENGAGEMENT

Burt Garland, Chair  
Alan Fine  
Richard Gilbert  
Kim Lieberman  
Russel Neiss

## ENSURING THE JEWISH FUTURE

Jeff Sparks, Chair  
Ruth Adler  
Douglas Baron  
Eddie Cherry  
Sarah Kovenock  
David Singer  
Susan Zimmerman

## STANDARDS & CAPACITY BUILDING

Craig Rosenthal, Chair  
Zachary Abeles  
Michael Abrams  
Anna Reby Bertman  
Daniel Bindler  
Jim Deutsch  
Sam Freedman  
James Hirschfield  
Naomi Shanker  
Elizabeth Wallace

## CARING FOR JEWS IN NEED-DOMESTIC

Mark Levin, Chair  
Rabbi James Bennett  
Keith Cohen  
Gary Godwin  
Kim Goldenberg  
Dr. Aviva Raskas-Adler  
Bradley Snitzer  
Dr. Lisa Suffian

## CARING FOR JEWS IN NEED-OVERSEAS

Susan Schlichter, Chair  
Marcy Cornfeld  
Carol Goldstein  
Michelle Hoberman  
Lisa Greenman Kraner  
Rachel Pepe  
Rabbi Susan Talve  
Stuart Zimmerman





Jewish Federation  
OF ST. LOUIS

JFedSTL.org

f JFedSTL @JewishFedSTL

📷 JFedSTL

## OUR MISSION

Jewish Federation mobilizes the Jewish community and its human and financial resources to preserve and enhance Jewish life in St. Louis, in Israel and around the world.

Proud member of



United Way  
of Greater St. Louis







# RubinBrown®

CERTIFIED PUBLIC ACCOUNTANTS  
BUSINESS CONSULTANTS

## SHARING OUR PASSION FOR THE FUTURE

---

*This publication is brought  
to you by a sponsorship  
from RubinBrown.*

RubinBrown is proud to be a leading corporate sponsor of Jewish Federation of St. Louis in its efforts to support programs, agencies and individuals that strengthen and enhance the Jewish community in St. Louis and around the world.



Jewish Federation  
OF ST. LOUIS